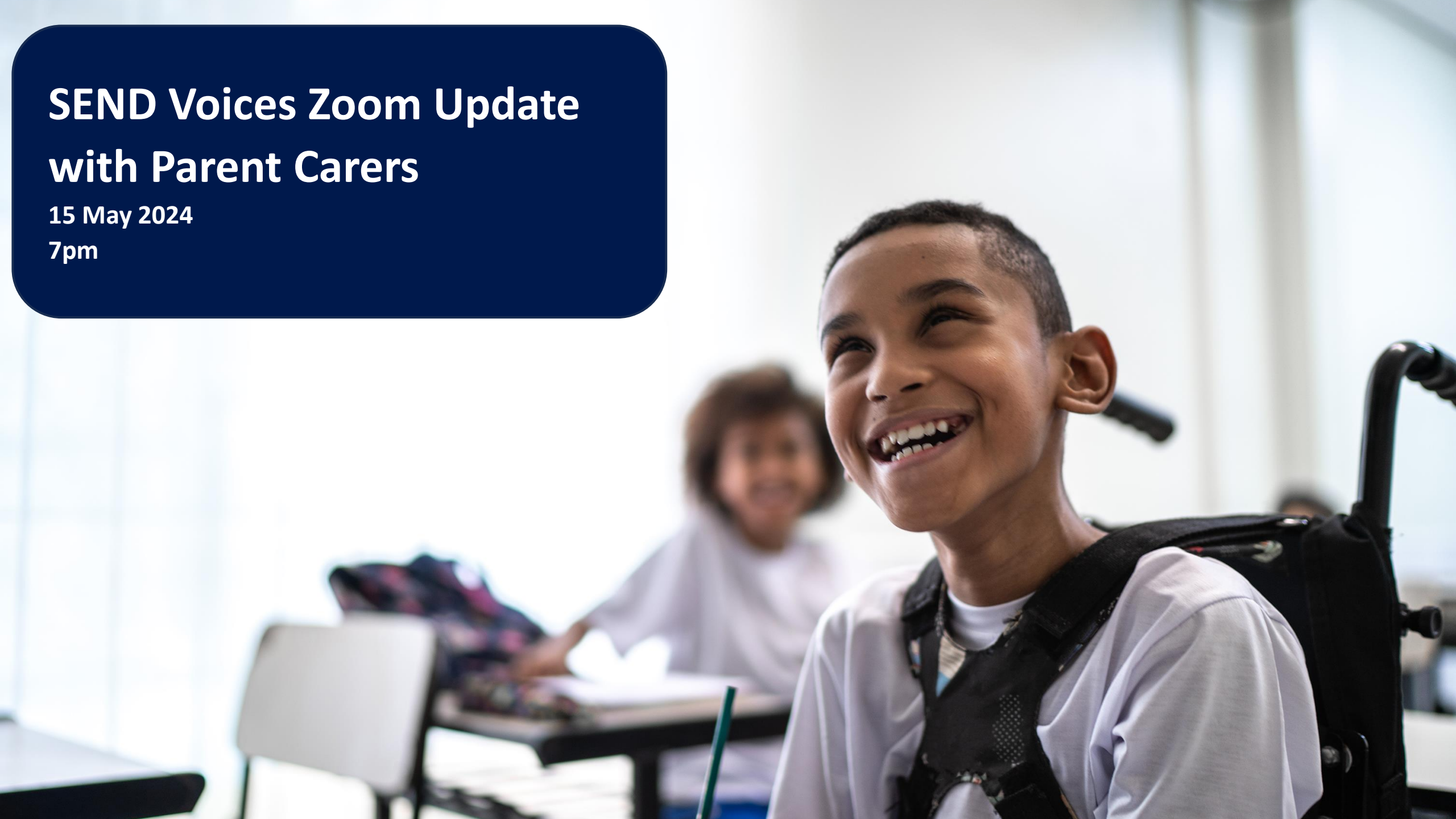


# SEND Voices Zoom Update with Parent Carers

15 May 2024

7pm



# Welcome & Introductions



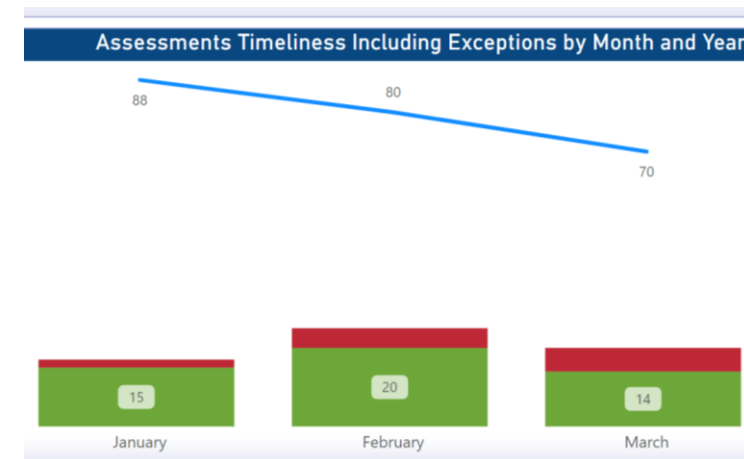
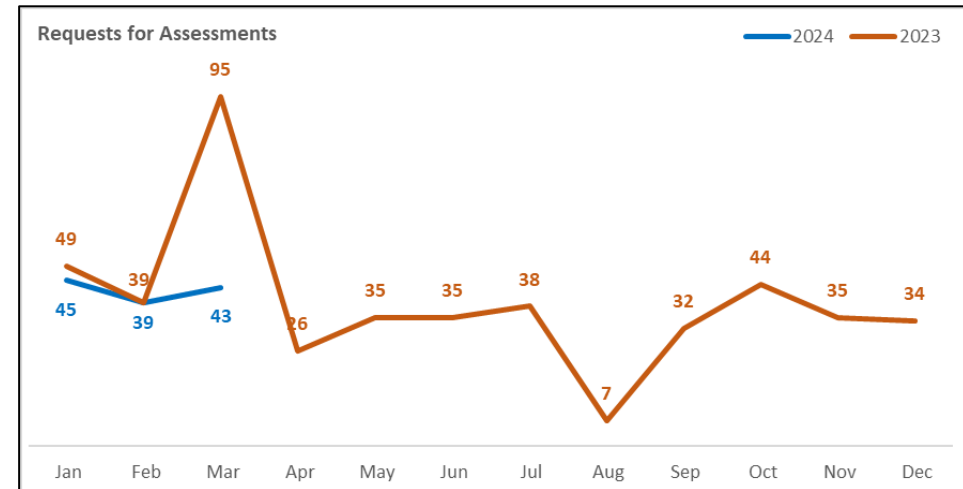
# Wokingham Borough Partnership Updates

- 1) SEND Data & SEND Team Update (*with Jamie*)
- 2) Progress on the Local Offer and Ordinarily Available Provision (*with Jamie*)
- 3) Other Key SEND Developments (*with Ming*)
- 4) SEND & Inclusion Strategy (*with Jonathan*)
- 5) Update from Health & Parent Carer Event (*with Miranda*)
- 6) Short Breaks (*with Kelli & Hayley*)



## Headlines in numbers

- **2000+** – numbers of EHCP maintained by Wokingham Borough Council
- **80%** - average EHCP 20 Week Timeliness for Spring term 2024, an improvement of 25% from same period ( 55%) last year
- **87%** - average % of decisions to agree to issue an EHCP following a statutory assessment during Spring term 2024
- **161** – number of EHC needs assessment requests received, a decrease of 25% for the same period (217) last year

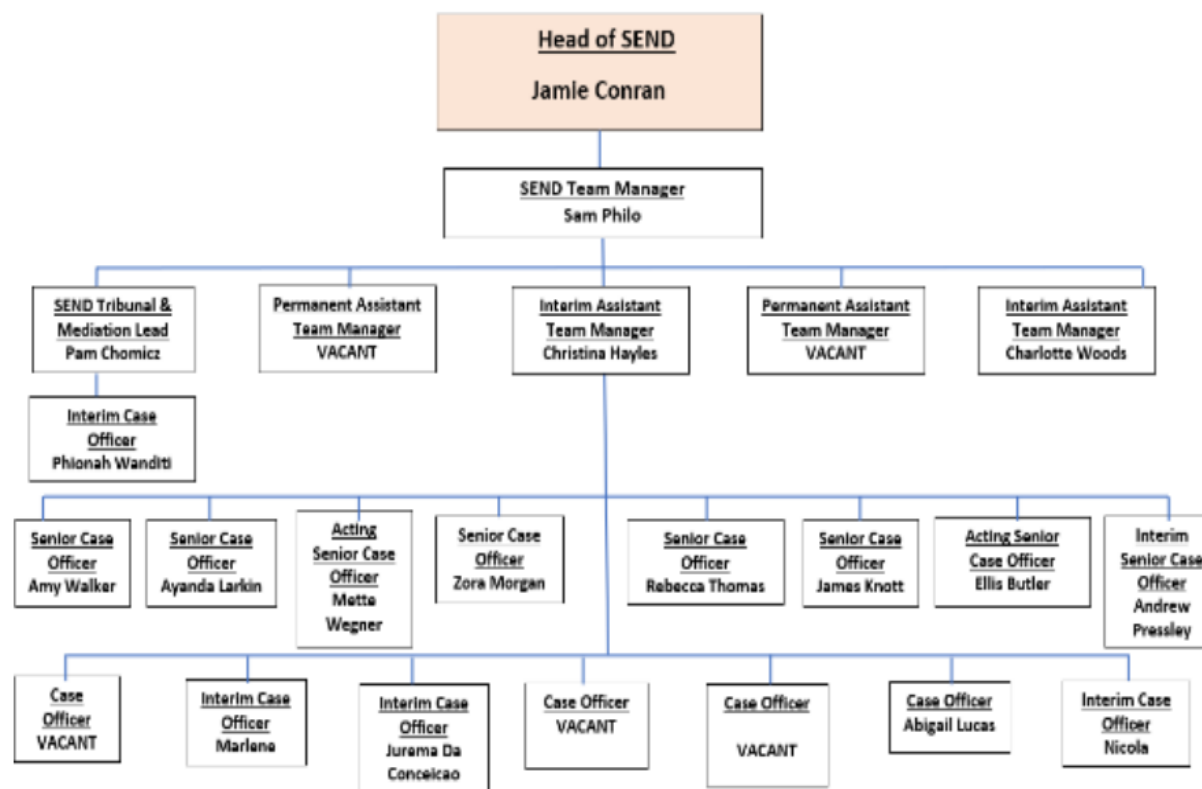


# SEND Team Update

## Recent Activity

- Recruited SEND Customer Relations Manager
- SEND Portal in development
- Following inboxes to be closed – PFA, School Age, EOTAS
- Main SEND, EHC Needs Assessment and Annual Review inboxes triaged daily
- SEND Communication Standards and Escalation Process in development

## SEND Structure Chart update April 2024



# Local Offer and 'what's on' in Wokingham Borough

Improved content on the local offer website – 160% increase in 'page hits' since April 2024

Local Offer Newsletter – 640 subscribers!

Local Offer Logo Competition for Wokingham children and young people

SEND Drop In

Preparation for Adulthood Event

Phase Transfer Webinar

**Subscribe to stay informed!**

[SEND Local Offer newsletters \(wokingham.gov.uk\)](http://wokingham.gov.uk)



**SEND Local Offer: Preparing for Adulthood Event**

Would you like to know more about your options once you turn 16?

Wokingham Borough Council's SEND Team invites you and your family to attend a free, market stall event, to help you explore options for your future and find out what support is available locally.

**Thursday 13 June**  
**3:30 to 5:50pm or 5:30 to 7:30pm**  
**Woodley Airfield Centre, RG5 4UX**

Book a free ticket at [ticketsource.co.uk/Wokingham-borough-send](https://ticketsource.co.uk/Wokingham-borough-send)  
For more information, email [localoffer@wokingham.gov.uk](mailto:localoffer@wokingham.gov.uk)

WOKINGHAM BOROUGH COUNCIL



**DESIGN A LOGO COMPETITION**

For Wokingham Borough Council's Local Offer website

Get creative and design a logo for our Local Offer website!

The Local Offer is for children and young people with additional needs and disabilities who live in Wokingham Borough. It is also for their families.

The website has information about:

- who helps children, young people and their families
- activities and clubs in the local area

You can use:

- felt tips
- colouring pencils
- any of these colours

Here are some logo ideas to get you started:



**PRIZES FOR WINNERS!**

**FIRST PRIZE**  
£25 Amazon voucher

**RUNNER UP PRIZE**  
£10 Amazon voucher

Competition deadline: Friday 10 May  
Please email entries to [localoffer@wokingham.gov.uk](mailto:localoffer@wokingham.gov.uk)

WOKINGHAM BOROUGH COUNCIL

**Phase Transfer Process:**  
Online information and Q&A session for parents and carers



**Does your child have an EHCP?  
Will they be moving into Reception or Year 7 in September 2025?**

We want to make sure you have the right information at the right time, so that you feel well-informed about your child's move to a new phase of education.

Wokingham Borough's SEND Team invites you to attend an online information and Q&A session which will provide you with a step-by-step guide to the Phase Transfer process: what to expect, and when for 2024/25.

**Thursday 20 June 2024**  
**10 to 11am or 7 to 8pm**

To book or to ask a question, please email [localoffer@wokingham.gov.uk](mailto:localoffer@wokingham.gov.uk)



# Ordinarily Available (and SEND Support)

Objective: There will be a consistent OAP offer across mainstream schools in Wokingham Borough, leading to a higher proportion of pupils getting their needs met earlier at SEND Support.


Wokingham Borough Council  
Ordinarily Available Provision - A Graduated Response  
SEND Support  
Settings and Schools

**Ordinarily Available:** A benchmark / baseline / common set of expectations about what provision should be made for the majority of children and young people with SEND, within early education settings, schools, academies, free schools and colleges of further education.

**Graduated Response:** Ordinarily available provision is made from funding ordinarily available to the setting through their core or delegated budget. The education setting must always consider their graduated response and show evidence of interventions over time, before they consider that it may be necessary for an EHC assessment to take place.

*This document has been co-produced with a range of professionals and partners. Thank you to all involved in the production of this document with a large thank you to parents and carers for feedback and input.*

*Please see a word cloud created by parents and carers of children and young people in Wokingham with SEND.*



Phase	Key actions	Timeline
1. Preparation	<b>Establish working parties ensuring that all stakeholders are represented and have input</b> Strategic group, operational group, specialist input	April 24
2. Review	<b>Review existing guidance and agree scope and layout of new OAP</b> Review existing Wokingham OAP; compare to other LAs Review of EEF and NASEN documents Mapping of provision and support available in Wokingham	June 24
3. Publish	<b>Publish a new Wokingham guidance</b> Agree scope and layout of new guidance; complete draft sections, send drafts to all stakeholders, publish	Dec 24
4. Launch	<b>Launch of the new OAP</b> Launch events e.g. network meetings, training events, Area SENCO school visits, parent forum, training for SEND team	Jan 25
5. Sustainability	<b>Support and training to schools to ensure that OAP is delivered effectively</b> Training offer, offer of SEND reviews, consider a local Inclusion Quality Mark	Ongoing



# Key SEND Developments

Wokingham schools are delivering very positive academic outcomes for pupils with SEND

	All National	All Wokingham (1725 pupils)	All SEND National	All SEND Wokingham (311 pupils)	EHCP National	EHCP Wokingham (93 pupils)
Average Attainment 8 score	46.2	52.6	28	35.1	14	17.8
% 5+ English and Maths	45	60	26.1	43.4	10.2	16.1
Average Progress 8 score	0	0.38	-0.62	-0.31	-1.12	-1.03





# Key SEND Developments – update of developing local provision

**Addington Special School expansion** – this is completed and has opened. All 16 additional places have been filled and children are attending the new provision. We have also already allocated all of the 12 additional places for September 2024.

- **Oak Tree Special School** – this is completed and has opened. All 52 places have been filled, of which 27 have been filled by Wokingham children. A further 22 Wokingham children will be placed in Oak Tree in 24/25.
- **Implementation of 2 x New Free Schools**
  - The DfE wants to delivery the build project itself. We are seeking clarity regarding next steps, including respective roles and responsibilities, but are in the process producing a handover of the project to the DfE after successfully founding local lands. There is a challenge nationally in DfE’s practical deliverability of new schools within the planned timescales. What will this mean to us?
  - Aside from the construction responsibilities, we are pleased to have successfully appointed the Trust to run the school, which is an existing Ofsted Outstanding Provider in the area and one which the local authority has a good relationship with.
  - As soon as we have further clarity regarding the timeline for this project of the two new free schools, we will keep parents/carers informed of it implication.



# SEND & Inclusion Strategy

1. Inclusion, access, and early intervention

Ensuring children get the right support in the right place, at the right time, as close to home as possible. Ensuring that every provider plays their part in meeting local SEND needs through proactive inclusion and early intervention.

2. Sufficiency of services and support

Ensuring there is access to sufficient high-quality education, health and care provision to address the special educational needs and disabilities of the local 0-25's population. Ensuring we address any identified gaps

3. Joint commissioning

Maximising the reach and impact of resources across the system through shared decision making; closer collaboration & service integration; effective use of shared data; rigorous contract management

4. Effective transitions

Ensuring children and families are prepared and ready for all transitions. Ensuring the local system plans for the long term and targets resources effectively at key stages

5. Communication and co-production

Implementing SEND Communications Plan. Refreshing Wokingham's SEND Coproduction Charter, with systematic reviews to ensure this is happening on the ground.

**Underpinning these Strategic Priorities are key Systems and Operational Improvement Priorities**

Look out for the consultation launch week commencing 27 May 2024!





# Wraparound Childcare Programme



**WOKINGHAM**  
BOROUGH COUNCIL

# Wraparound Programme – Aim

- The government's aim is for all parents of primary school children who need it to be able to access childcare in their local area from 8am – 6pm, Monday to Friday during term time.
- Parents of primary school aged children will still be expected to pay to access this provision, as this programme aims to increase the availability of childcare, rather than subsidise childcare, but support with costs will be available to eligible parents through Universal Credit childcare and Tax-Free Childcare.



**WOKINGHAM**  
**BOROUGH COUNCIL**

# Funding for Schools & Providers

- Programme funding can be used to cover costs including staffing, training, and transport costs such as minibus hire (not purchase, although capital funding could be used for this), as well as resources. It can also be used to contribute to running costs whilst demand builds, to remove any financial risk to providers of offering additional places before demand is guaranteed.
- Capital funding (provided separately) can be used so providers can ensure that inclusive provision is set up from the beginning, by using it to establish inclusive spaces and buy inclusive equipment and resources.



# Where we are now...

- Collecting more data to ensure we understand current supply and demand.
- Steering group includes representatives from providers, schools, HAF and SEND Voices is meeting fortnightly.
- Talking to schools, providers and childminders to encourage expansion, extension or creation of spaces.
- Application for providers to request support/funding to develop or expand the provision available by the end of May.
- Working towards 14<sup>th</sup> June deadline for DfE submission.



# Next Steps

- Data so far indicates shortage of SEND wraparound provision in both mainstream and specialist provision.
- Mapping exercise to see where the current provision exists.
- Beginning to work with schools and providers to understand the barriers.
- Planning further parent engagement to understand their barriers to accessing wraparound care.



# Update from Health (Parent Carer Health Engagement Event)

**Objectives:** Parents and Carers will have information on Help Early and Needs Led support from health systems. Parents and Carers to share information on how services can be developed to improve the experience and outcomes from health services.

**Parent Carer Health Engagement Event to be held 6/6/2024 at Lagoona Park, RG30 3UH.**

2 session 10.00-12.00 and 12.00-14.30

**Four focused groups will be held in each session:-**

- ✓ Neurodiversity (ADHD and Autism)
- ✓ Early Help
- ✓ Therapies – Physiotherapy, Speech and Language and Occupational Therapy
- ✓ Preparation for Adulthood



**Market stalls from:** Child Adolescent Mental Health Service, Children and Young People Integrated Therapies, Keyworking programme, Neurodiversity, RBH-governors, Diabetes, Royal Berkshire Hospital Learning Disability Team, Meet PEET



Short Breaks Review  
SEND Voices Update  
15 May 2024

---



# Project Objectives

1. To understand the current need for short breaks in Wokingham based on review of data.
2. To understand the current demand and if there is a mismatch between current provision take up and need.
3. To understand if any gaps in provision exist.
4. To understand the views of children, their families and providers and what they want in the future.
5. To complete an options appraisal setting out options for how the local Short Breaks offer could be improved for children and their families.

## Objective 4: To understand the views of children, their families and providers and what they want in the future

---



Use existing information and feedback as starting point and baseline.



Work with and via membership of the Short Breaks Steering group to identify further opportunities within the project timetable to directly seek views e.g. ME2 Youth Action Group

# Key Themes: Knowledge and Communication

---

- Families have reported the process and contact with the Short Breaks team is a positive experience.
- There is a mixed understanding of what short breaks are, where to find information, how to apply for Short Breaks Payments and where to find the Short Breaks Statement.
- Continue to promote what a Short Break is, eligibility and how to apply - use the Local Offer and CAN Network more to share information with parents as this is recognised as a good source of information.
- Further work to improve the clarity and accessibility of the Short Breaks Statement.

# Key Themes: Access

---

- Some services were reported to be oversubscribed or have waiting lists
- Some services were reported to be too far to travel to
- Families would like to access short breaks so that they can spend time with their other children, with their partner, for themselves or just to catch up on chores.
- Staff having the knowledge or capability to deal with behavioural needs was by far the most important factor to enable a child to access a short break activity.
- Another key factor in the child accessing a short break is the time of day.
- There is an opportunity to provide support to mainstream organisations to be more inclusive or promote support available to children to access more mainstream activities.

# Key Themes: Future Service Development


---

- There is a desire for short breaks to be 3hrs + long
- There is a desire for more choice. SB payments are being used for a range of services, including PA's, however families report they cannot always recruit and retain PAs/or find services to use their Short Breaks payments on.
- Popular activities that families said they would like to access include:
  - Personal assistants
  - After school and holiday clubs
  - Outdoor activities
  - Sports
  - Computer gaming
  - Other mainstream activities – with support



# Timeline

By September 2024, we intend to have developed an options paper, sought agreement from the Council's Leadership Team for the recommend approach/es and commenced a process of implementation.



# Contacts

---

We would welcome any additional feedback from Families around short breaks. If you would like to contribute, comments and feedback can be sent to :

[Childrenscommissioningteam@wokingham.gov.uk](mailto:Childrenscommissioningteam@wokingham.gov.uk)

By 31<sup>st</sup> May 2024



